



The Venue



Mount Juliet



Mount Juliet

Thomastown, Co. Kilkenny, Ireland
 Tel: 353 56 7773000 Fax: 353 56 7773019
 Email: info@mountjuliet.ie
 Web: www.mountjuliet.ie

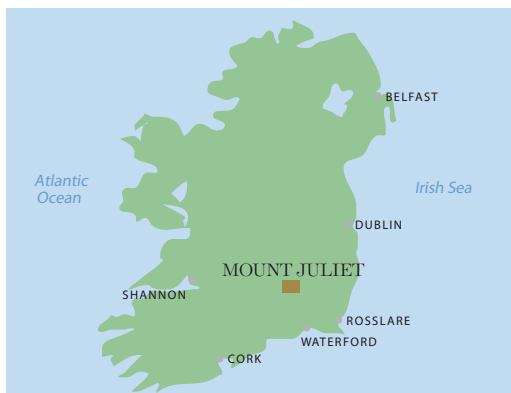
Location

75 miles south of Dublin. 10 miles south east of Kilkenny and 30 miles north of Waterford. On the banks of the River Nore and part of Ireland's premier golf and sporting estate.

Transportation to/from hotel

| from | km | miles | hours | via |
|-------------------|-----|-------|--------|----------|
| City of Dublin | 121 | 75 | 2 | Train |
| Dublin Airport | 113 | 70 | 2 | Car/taxi |
| Cork Airport | 170 | 106 | 2 | Car/taxi |
| Shannon Airport | 160 | 100 | 2 | Car/taxi |
| Waterford Airport | 32 | 20 | 45mins | Car/taxi |

Helicopter landing facilities available.



Hotel features

- ▶ An award-winning hotel, Mount Juliet, is one of the world's prestigious championship golfing estates, known as the 'Augusta' of Europe, designed by Jack Nicklaus and home to the Irish Opens of '93, '94, '95 and the 2002 World Golf Championship - American Express Championship.
- ▶ Golf services including individual and group tuition.
- ▶ Wide range of sporting, equestrian and fishing activities on the estate.
- ▶ Health Club and The Spa.
- ▶ Children's play area.
- ▶ Elegant Georgian country house, surrounded by 1,500 acres of lush Irish pastures and rolling woodlands provide a rare and beautiful setting for a memorable experience with a refined blend of tradition and excitement.
- ▶ Versatile meeting rooms with natural light.
- ▶ Award-winning restaurants.
- ▶ Hotel can organise airport transfers, car hire and chauffeur driven services/tours.

Guest room information

- ▶ A delightful range of accommodation, including 32 refurbished guest rooms in Mount Juliet House, 16 Club rooms at the Hunters Yard and 10 Rose Garden Lodges.

Guest room facilities

- ▶ Features include cable television, direct-dial telephone, in-room safe, trouser press.

Guest room services

- ▶ Laundry & valet service.
- ▶ Fresh fruit and flowers every day.

Mount Juliet



Business services

- ▶ Newly upgraded Business Centre with its own entrance in The Hunters Yard, offering a full range of secretarial and administrative services.

Conference and meeting facilities

- ▶ 4 meeting rooms suitable for small meetings, private dinners and receptions.
- ▶ Home to Ireland's premier business events.

Dining

- ▶ The Lady Helen Dining Room serves international cuisine in elegant and sophisticated surroundings with panoramic views over the river Nore.
- ▶ Kendals, serves contemporary Irish cuisine with a Mediterranean twist.
- ▶ The Presidents Bar, a favourite meeting place, also serves a range of light dishes.



Golf

- ▶ 18 hole Jack Nicklaus designed Championship Golf Course, 18 hole putting course, 3 hole golf academy and golf practice area, including driving bays. Designed to take advantage of the natural beauty of the landscape. Ranked among the world's finest parkland courses. Playing over 7,00 yards from the championship tees and covering 200 acres, the course suits all levels of golfers. Has hosted the Irish Open on 3 occasions and hosted the World Golf Championship - American Express Championship in September 2002. Resident PGA Professionals offer tuition and golf clinics.

Other Fitness & Leisure

- ▶ Health Club with sauna, steam room, swimming pool and fully equipped gymnasium.
- ▶ The Spa provides the perfect escape in impeccable surroundings. Offering a wide range of traditional and alternative health and beauty treatments including La Stone therapy, The Dead Sea Discovery Flotation Room and the The Relaxation Room.
- ▶ Equestrian Centre with lessons, trail riding and cross country jumping. Visit Ballylinch Stud Farm, an integral part of the estate.
- ▶ Fishing for wild Atlantic salmon and trout. Tennis, cricket, croquet, clay target shooting, archery, snooker, bicycles and walks.



Places of interest

- ▶ Kilkenny Castle. Jerpoint Abbey. Medieval City of Kilkenny. Waterford Crystal. Picturesque villages of Bennettsbridge. Inistioge and Graiguenamanagh. Rock of Cashel.

General information

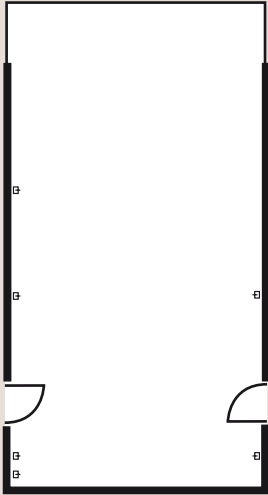
- ▶ Currency: Euro.
- ▶ Weather: Temperature range from November to March +/-6°C (+/-42°F), June to September +/-18°C (+/-64°F).



| Room | Area | | Dimensions | | Height | | Capacities | | | | | |
|-------------------------|------|-------|------------|------------|--------|--------|------------|---------|---------|-----------|------------|---------|
| | Sq m | Sq ft | Metres | Feet | Metres | Feet | Classroom | Theatre | Banquet | Reception | Conference | U-shape |
| Jack Nicklaus Boardroom | 53.7 | 578 | 10.4x5.2 | 34'x17' | 3.6 | 12' | - | - | 10 | - | - | 10 |
| The Open Room | 65.8 | 708 | 14x4.6 | 46'x15' | 3.6 | 12' | 40 | 75 | 70 | - | - | - |
| The Loft | 68.8 | 741 | 13.4x5.2 | 44'x17' | 3.6 | 12' | 30 | 50 | - | - | - | 40 |
| The Caretakers Room | 72 | 776 | 10.4x7 | 34'x23' | 3.6 | 12' | 30 | 50 | - | - | 20 | 40 |
| Kendals | 147 | 1,582 | 21x7 | 68'11"x23' | 3.3 | 10'10" | 60 | 130 | 130 | - | 50 | 45 |



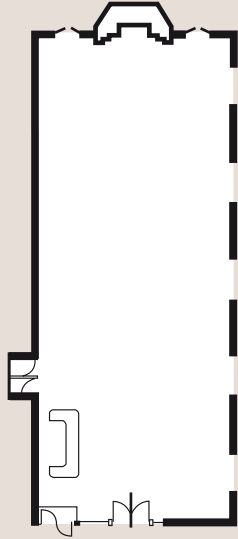
THE JACK NICKLAUS BOARD ROOM



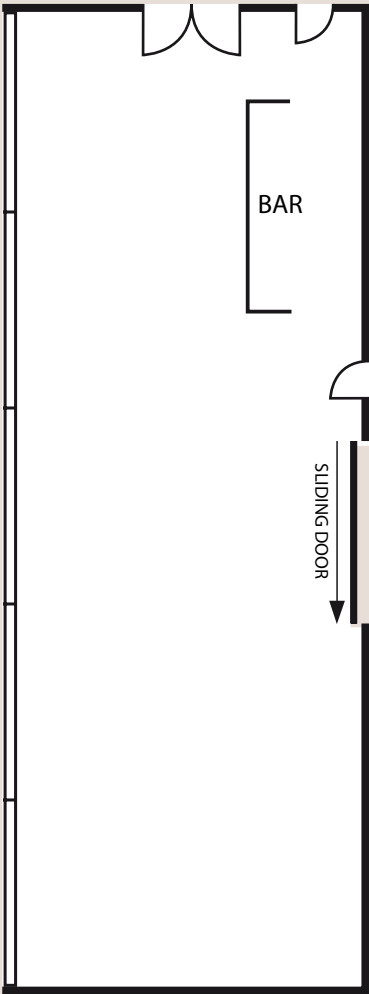
THE OPEN ROOM



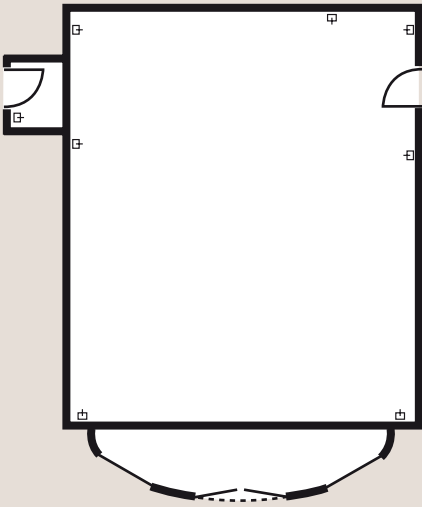
THE LOFT



KENDALS



THE CARETAKERS ROOM



Plans not to scale

