

# Kilkenny

**THE BEST  
OF IRELAND**

**KILKENNY VISITOR MAP**

## KILKENNY CITY MAP

***FOLLOWING IN THE  
FOOTSTEPS OF HISTORY***



## COME SEE, COME EXPLORE KILKENNY CITY

1



### Kilkenny Castle & Park

A 12th century castle set in extensive parklands, built for William Marshall and remodeled in Victorian times.

[kilkennycastle.ie](http://kilkennycastle.ie)

2



### National Craft Gallery

The National Design & Craft Gallery, located in the former stable yard of Kilkenny Castle, was established in 2000 by the Design and Crafts Council of Ireland.

[ndcg.ie](http://ndcg.ie)

3



### Butler House & Gardens

Butler House (once a dower house to Kilkenny Castle) was home to the Earls of Ormonde, who built the stables and coach houses.

[butler.ie](http://butler.ie)

4



### Talbots Tower

Talbot's Tower and its adjoining walls are the best preserved section of the city's medieval defenses.

5



### Hurling Monument – Canal Square

Sculpted by Barry Wrafter, the "Pride of Kilkenny" depicts the ancient Irish game of hurling, and is dedicated to "all who hurl for Kilkenny".

6



### Shee Alms House

Founded in 1582 by Sir Richard Shee, a wealthy city merchant, the purpose of the Alms House institution was to care for the poor by providing bed and board for work.

7



### Medieval Mile Museum

Unearth 800 years of Irish History at the Medieval Mile Museum, located in the heart of the city and the centre of Ireland's Medieval Mile. [medievalmilemuseum.ie](http://medievalmilemuseum.ie)

# From Castle to Cathedral and everything in-between...

**Kilkenny City is the top heritage and cultural destination in Ireland with an abundance of activities and events throughout the year bound to excite you.**

Experience stunning medieval castles, towering cathedrals, historic buildings and winding slipways in an exciting, cosmopolitan city steeped in history and heritage.

For lots of things to see and do go to  
**[visitkilkenny.ie](http://visitkilkenny.ie)**



# COME SEE, COME EXPLORE KILKENNY CITY



## Kilkenny Castle & Park

A 12th century castle set in extensive parklands, built for William Marshall and remodeled in Victorian times.  
[kilkennycastle.ie](http://kilkennycastle.ie)



## National Craft Gallery

The National Design & Craft Gallery, located in the former stable yard of Kilkenny Castle, was established in 2000 by the Design and Crafts Council of Ireland.  
[ndcg.ie](http://ndcg.ie)



## Butler House & Gardens

Butler House (once a dower house to Kilkenny Castle) was home to the Earls of Ormonde, who built the stables and coach houses.  
[butler.ie](http://butler.ie)



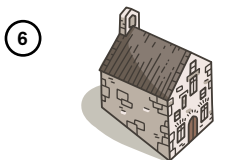
## Talbot's Tower

Talbot's Tower and its adjoining walls are the best preserved section of the city's medieval defenses.



## Hurling Monument - Canal Square

Sculpted by Barry Wrafter, the "Pride of Kilkenny" depicts the ancient Irish game of hurling, and is dedicated to "all who hurl for Kilkenny".



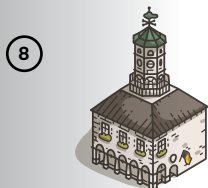
## Shee Alms House

Founded in 1582 by Sir Richard Shee, a wealthy city merchant, the purpose of the Alms House institution was to care for the poor by providing bed and board for work.



## Medieval Mile Museum

Unearth 800 years of Irish History at the Medieval Mile Museum, located in the heart of the city and the centre of Ireland's Medieval Mile.  
[medievalmilemuseum.ie](http://medievalmilemuseum.ie)



## The Tholsel

The name Tholsel comes from two old English words 'toll' meaning tax and 'sael' meaning hall and is fondly referred to as the Town Hall. Today it is a seat of local government.



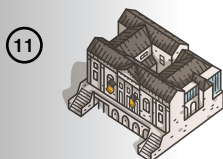
## The Hole in the Wall

The Hole in the Wall is a 16th Century tavern in Ireland's oldest surviving townhouse. To gain access from the High St to the rear of the inner house, a hole was punched in the wall, thus giving it its name.



## Kyteler's Inn

First established by Dame Alice Kyteler in the 13th century, Kyteler's Inn is one of Ireland's oldest inns.  
[kytelersinn.com](http://kytelersinn.com)



## Grace's Castle

Grace's Castle is used for sittings of the Circuit and District Courts. Originally the town house of the wealthy Grace family, it was built in 1210 and converted to a prison in 1566.



## Rothe House & Gardens

Art and artefacts in a 17th century Tudor period merchants townhouse and restored renaissance garden, complemented by a large vegetable and herb garden flanked by clipped Holm oak trees.  
[rothehouse.com](http://rothehouse.com)



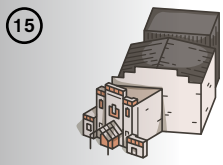
## Smithwick's Experience

With over 300 years of brewing experience, let your senses come to life as you immerse yourself in the history of Ireland's favourite Ale.  
[smithwicksexperience.com](http://smithwicksexperience.com)



## St. Francis Abbey

The abbey was founded by Richard Marshall, 3rd Earl of Pembroke, between 1231 and 1234. The Franciscan community developed red ale in the 14th Century, and their legacy forms a rich part of Kilkenny's history.



## Watergate Theatre

From the time the Duke of Ormonde (1698) brought the first Strollers Theatre group to Kilkenny, to the present day, Kilkenny has been synonymous with the world of theatre.  
[watergatetheatre.ie](http://watergatetheatre.ie)



## St. Mary's Cathedral

Mother Church of the Diocese of Ossory, a towering 186 feet cut limestone structure of gothic design by William Deane Butler, based on Gloucester Cathedral built by the people of God during the famine times.  
[stmaryscathedral.ie](http://stmaryscathedral.ie)



## Black Abbey

Founded in 1225 by Sir William Marshall (Earl of Pembroke) for the Dominican Friars. At the Abbey's entrance, there is a series of monumental slabs and stone coffins dating from the middle ages.  
[visitkilkenny.ie/black\\_abbey](http://visitkilkenny.ie/black_abbey)



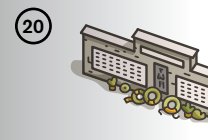
## St. Canice's Cathedral & Round Tower

A site for Christian worship led by St. Canice in the 6th century, the Cathedral was erected in the 13th century. Climbing the tower offers the best views of the city.  
[stcanicescathedral.ie](http://stcanicescathedral.ie)



## Green's Bridge

Green's Bridge is an elegant, Palladian-style, limestone arch bridge over 250 years old that crosses the river Nore in Kilkenny.



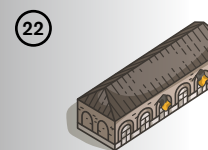
## WW1 Memorial

Engraved in tablets of Kilkenny Limestone on a natural stone wall, this memorial commemorates over 800 men and women from the County of Kilkenny who died in World War 1 (1914-1918).



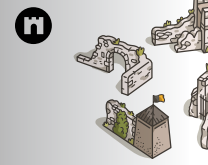
## Evan's Home - Butler Gallery

The Butler Gallery is central to Kilkenny's cultural life. It houses an excellent calendar of exhibitions from renowned Irish and International artists and is free of charge.  
[butlergallery.com](http://butlergallery.com)



## Famine Experience - MacDonagh Junction

Visit Kilkenny Union Workhouse to hear the poignant stories of the Workhouse inmates and staff, a true reflection of the Kilkenny Famine Experience.  
[kilkennyfamineexperience.com](http://kilkennyfamineexperience.com)



## City Walls

Evidence of remains of the original Kilkenny city walls built during the 13th century.



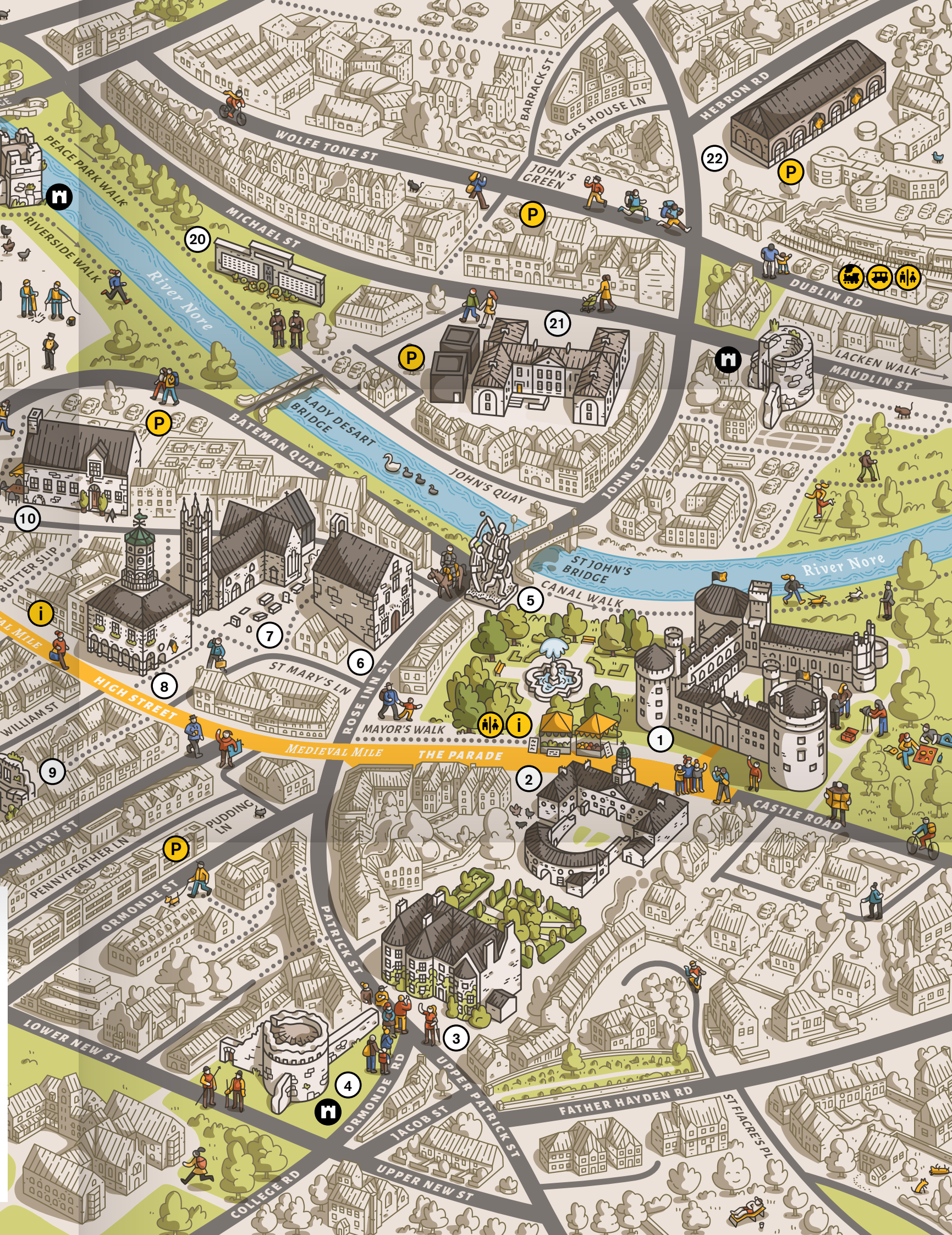
# KILKENNY CITY MAP

Kilkenny  
THE BEST OF IRELAND

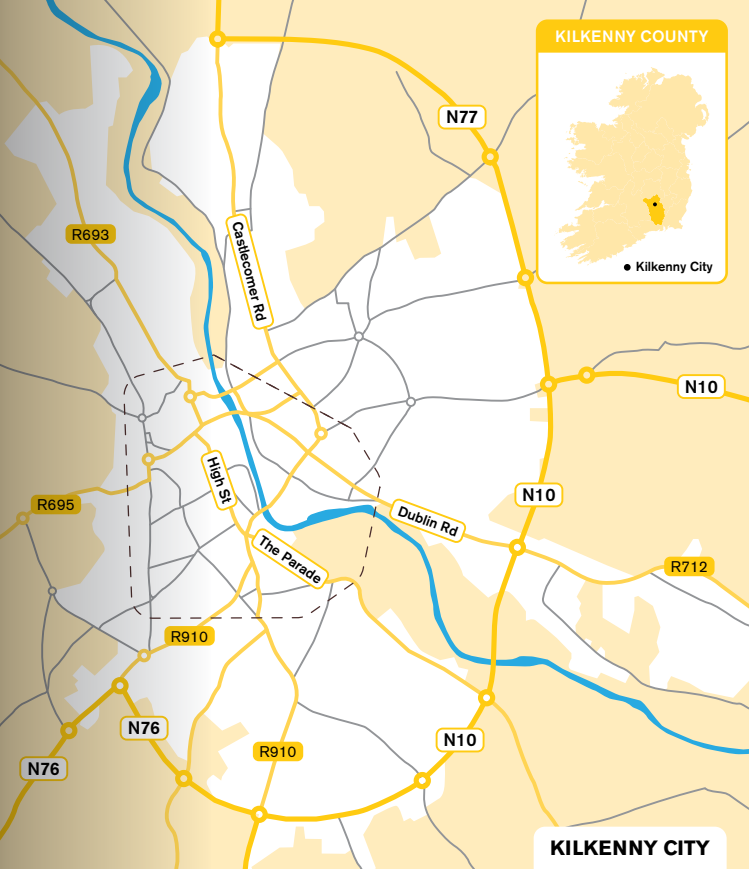
IRELAND'S  
MEDIEVAL  
MILE

IRELAND'S  
ANCIENT EAST®

- |                                   |                           |  |   |
|-----------------------------------|---------------------------|--|---|
| 1 Kilkenny Castle & Park          | 8 The Tholsel             | 15 Watergate Theatre                   | 22 Famine Experience – MacDonagh Junction |
| 2 National Craft Gallery          | 9 The Hole in the Wall    | 16 St Mary's Cathedral                 | City Walls                                |
| 3 Butler House & Gardens          | 10 Kyteler's Inn          | 17 Black Abbey                         | Tourist Information                       |
| 4 Talbots Tower                   | 11 Grace's Castle         | 18 St Canice's Cathedral & Round Tower | Parking                                   |
| 5 Hurling Monument – Canal Square | 12 Rothe House & Gardens  | 19 Green's Bridge                      | Garda Station                             |
| 6 Shee Alms House                 | 13 Smithwick's Experience | 20 WW1 Memorial                        | Public Toilet                             |
| 7 Medieval Mile Museum            | 14 St. Francis Abbey      | 21 Evan's Home – Butler Gallery        | Bus Stop                                  |
|                                   |                           |  | Railway Station                           |







For lots of things to see and do go to  
**visitkilkenny.ie**

*Kilkenny*

THE BEST  
OF IRELAND



IRELAND'S  
**MEDIEVAL  
MILE**  
Kilkenny



IRELAND'S  
ANCIENT EAST®

Log in to our free  
Kilkenny Medieval Tour.



Listen on  
**Apple Podcasts**



Listen on  
**Spotify**



Listen on  
**Google Podcasts**



Listen on  
**Soundcloud**



# Kilkenny

THE BEST  
OF IRELAND

KILKENNY VISITOR MAP

## KILKENNY COUNTY MAP

***JOURNEY THROUGH THE LAND  
OF CULTURE AND CREATIVITY***





# COME SEE, COME EXPLORE KILKENNY COUNTY

1



## Grangefertagh Round Tower

Grangefertagh Round Tower is the only remnant of an early monastery founded by St Ciaran of Seir. The original site is thought to date back to the 6th Century.

2



## Ballykeeffe Amphitheatre

Ballykeeffe Amphitheatre brings the authentic atmosphere of an open-air Italian theatre to the quaint Kilkenny countryside.

[ballykeeffeamphitheatre.com](http://ballykeeffeamphitheatre.com)

3



## Ignatius Rice Homestead

The thatched house at "Westcourt" is the birthplace of Blessed Edmund Rice, founder of the Christian Brothers and Presentation Brothers. Visit [discoverireland.ie](http://discoverireland.ie) for more information

4



## Callan Moate

Callan Moate was built c. 1217 by Geoffrey FitzRobert. Local legend claims that cannons were placed on the motte by Oliver Cromwell's soldiers during the 1650 Siege of Callan.

5



## Jenkinstown Park

Once part of a large estate. Today, the old house is long gone but remnants of 1870s parkland have survived, including rare Chinese Necklace Poplars. Visit [coillte.ie](http://coillte.ie) for more information

6



## Dunmore Cave

A show cave open to the public, well known for its rich archaeological discoveries and for being the site of a Viking massacre in 928.

Visit [heritageireland.ie](http://heritageireland.ie) for more information

7



## Castlecomer Discovery Park

Castlecomer Discovery Park and Visitor Centre consists of a wonderful 80 acre discovery park in the Castlecomer Demesne.

[discoverypark.ie](http://discoverypark.ie)

8



## Shankill Castle

A historic Irish castle, gardens, café, organic farm in Paulstown, Co. Kilkenny. Home and studio of artist Elizabeth Cope.

[shankillcastle.com](http://shankillcastle.com)

# Out and About in Kilkenny County...

**Kilkenny's medieval cityscape, vibrant creative culture, and welcoming citizens make it the perfect location to visit.**

Beyond the city of Kilkenny, you'll find charming towns and villages to see, ways to wander, and new adventures to discover. Kilkenny County quietly emanates the very best that Ireland has to offer. From culture to creativity, fine eateries, great experiences, outdoor adventure to medieval magic, explore all that Kilkenny has to offer.

For lots of things to see and do go to **[visitkilkenny.ie](http://visitkilkenny.ie)**





# COME SEE, COME EXPLORE KILKENNY COUNTY

1



## Grangefertagh Round Tower

Grangefertagh Round Tower is the only remnant of an early monastery founded by St Ciaran of Seir. The original site is thought to date back to the 6th Century.

2



## Ballykeeffe Amphitheatre

Ballykeeffe Amphitheatre brings the authentic atmosphere of an open-air Italian theatre to the quaint Kilkenny countryside. [ballykeeffeamphitheatre.com](http://ballykeeffeamphitheatre.com)

3



## Ignatius Rice Homestead

The thatched house at "Westcourt" is the birthplace of Blessed Edmund Rice, founder of the Christian Brothers and Presentation Brothers. Visit [discoverireland.ie](http://discoverireland.ie) for more information

4



## Callan Moate

Callan Moate was built c. 1217 by Geoffrey FitzRobert. Local legend claims that cannons were placed on the motte by Oliver Cromwell's soldiers during the 1650 Siege of Callan.

5



## Jenkinstown Park

Once part of a large estate. Today, the old house is long gone but remnants of 1870s parkland have survived, including rare Chinese Necklace Poplars. Visit [coillte.ie](http://coillte.ie) for more information

6



## Dunmore Cave

A show cave open to the public, well known for its rich archaeological discoveries and for being the site of a Viking massacre in 928.

Visit [heritageireland.ie](http://heritageireland.ie) for more information

7



## Castlecomer Discovery Park

Castlecomer Discovery Park and Visitor Centre consists of a wonderful 80 acre discovery park in the Castlecomer Demesne.

[discoverypark.ie](http://discoverypark.ie)

8



## Shankill Castle

A historic Irish castle, gardens, café, organic farm in Paulstown, Co. Kilkenny. Home and studio of artist Elizabeth Cope.

[shankillcastle.com](http://shankillcastle.com)

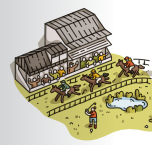
9



## St. Mary's Church, Gowran

This church was built in the late thirteenth century as a collegiate church and was served by a college - clerics who lived in a community but did not submit to the rule of a monastery.

10



## Gowran Park

Best known for staging the historic Thyestes Chase each year, Gowran Park is renowned as one of the most scenic racecourses in the country. [gowranpark.ie](http://gowranpark.ie)

11



## Ullard Monastic Site

The 12th century romanesque nave and chancel church was built on the site of a 7th century monastery founded by St Fiachre.

Visit [megalithicireland.com](http://megalithicireland.com) for more information

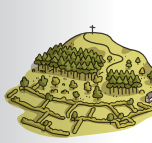
12



## Duiske Abbey

Duiske Abbey was founded by William Marshal in 1204 and is one of the first, largest and perhaps the finest of the thirty-four medieval Cistercian monasteries in Ireland.

13



## Brandon Hill

This 19km loop summits Kilkenny's highest point and treats walkers to views over the captivating landscape of Ireland's Ancient East and beyond. Visit [trailkilkenny.ie](http://trailkilkenny.ie) for more information

14



## Woodstock Gardens & Arboretum

Located overlooking the River Nore Valley and the picturesque village of Inistioge. The gardens date to the 1740's with the main development taking place in the 1800's. [woodstock.ie](http://woodstock.ie)

15



## Kilfane Glen and Waterfall

Untouched for 200 years, Kilfane Glen and Waterfall is a pristine example of a romantic era garden dating from the 1790s.

[kilfane.com](http://kilfane.com)

16



## Jerpoint Abbey

Founded in the 12th century, Jerpoint Abbey is one of the best examples of a medieval Cistercian Abbey in Ireland.

Visit [heritageireland.ie](http://heritageireland.ie) for more information

17



## Jerpoint Park and Lost Town

Jerpoint Park is privileged to host a Monument of notable importance: The Lost Town of Newtown Jerpoint.

[jerpointpark.com](http://jerpointpark.com)

18



## Jerpoint Glass

Since 1979 the Master Craftsmen at Jerpoint Glass Studio have designed and created Irish handmade glass for your home.

[jerpointglass.com](http://jerpointglass.com)

19



## Nore Valley Park

Nore Valley Park Open Farm in Bennettsbridge, County Kilkenny, offers numerous exciting activities for an enjoyable visit.

[norevalleypark.com](http://norevalleypark.com)

20



## Nicholas Mosse Pottery

Nicholas Mosse Pottery was established by Nicholas Mosse in 1976 after periods of training in England and Japan.

[nicholasmosse.com](http://nicholasmosse.com)

21



## Kells Augustian Priory

Situated alongside King's River beside the village of Kells, Kells Priory is one of the most impressive medieval monuments in Ireland.

Visit [heritageireland.ie](http://heritageireland.ie) for more information

22



## Gáirdín an Ghorta

Gáirdín an Ghorta is a National Garden of Remembrance. The journey along the path is synonymous with the journey of the Irish people from pre-famine era to the future.

23



## Lingaun Valley Trail

Discover Ancient and Sacred Sites of the Lingaun Valley. Sites such as Knockroe Passage Tomb which is older than Newgrange, Stonehenge and the pyramids in Egypt!

24



## Grannagh Castle

Grannagh or Granny Castle overlooks the River Suir, close to Waterford. It was surrendered during the Cromwellian Campaign.

Visit [megalithicireland.com](http://megalithicireland.com) for more information

25



## Tory Hill

Tory Hill is a 4.0 kilometer lightly trafficked loop trail that features beautiful wild flowers and is good for all skill levels.

Visit [trailkilkenny.ie](http://trailkilkenny.ie) for more information





- Motorways
- Primary Roads
- Local Roads
- Towns
- Rivers
- County Border

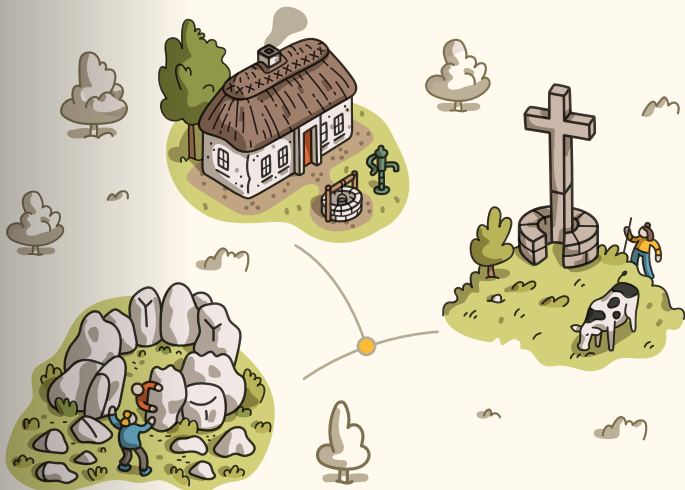
**Golf Courses**

- Callan Golf Club
- Kilkenny Golf Club
- Castlecomer Golf Club
- Gowran Golf Club
- Mount Juliet
- Mountain View Golf Club
- New Ross Golf Club
- Waterford Golf Club

**Things to see and do in Kilkenny**

- Grangefertagh Round Tower
- Ballykeeffe Amphitheatre
- Ignatius Rice Homestead
- Callan Moate
- Jenkinstown Park
- Dunmore Cave
- Castlecomer Discovery Park
- Shankill Castle
- St. Mary's Church, Gowran
- Gowran Park
- Ullard Monastic Site
- Duiske Abbey
- Brandon Hill
- Woodstock Gardens & Arboretum
- Kilfane Glen and Waterfall
- Jerpoint Abbey
- Jerpoint Park and Lost Town
- Jerpoint Glass
- Nore Valley Park
- Nicholas Mosse Pottery
- Kells Augustian Priory
- Gáirdín an Ghorta
- Lingaun Valley Trail
- Grannagh Castle
- Tory Hill





## Planning to Visit?

Kilkenny is just 130km from the capital, Dublin, and close to the country's main ferry ports, makes Kilkenny an easily accessible and unmissable destination.

### KILKENNY COUNTY



For lots of things to see and do go to  
**visitkilkenny.ie**



Log in to our free  
Kilkenny Medieval Tour.



Listen on  
Apple Podcasts



Listen on  
Spotify



Listen on  
Google Podcasts



Listen on  
Soundcloud